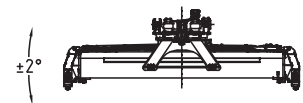
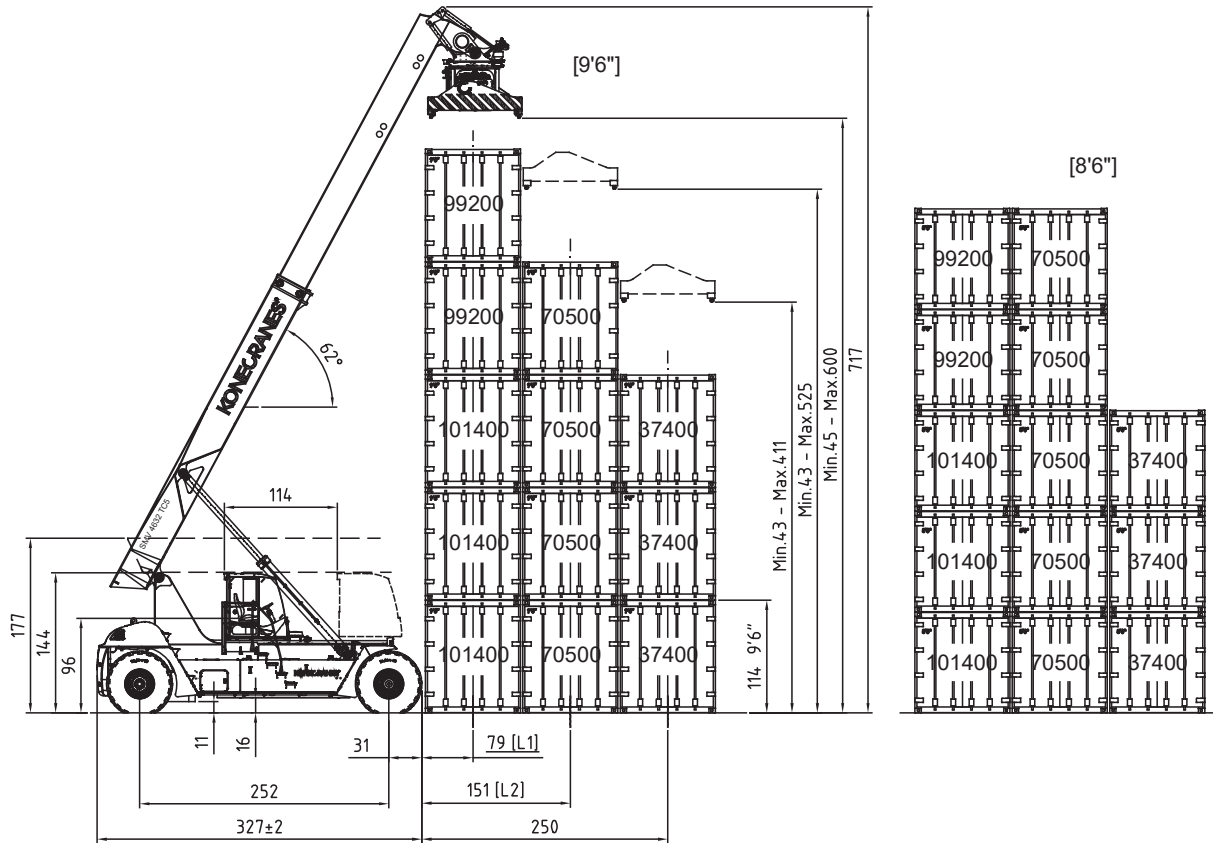


TECHNICAL DATA : SMV 4632 TC5

Machine type		SMV 4632 TC5
LOAD HANDLING DATA		
Lifting capacity (LC1 /LC2 /LC3)	lbs	101 400 / 70 500 / 37 400
Lifting capacity (LC1 /LC2 /LC3) at max lifting height	lbs	99 200 / 70 500 / 37 400
Load center (LC1 /LC2 /LC3)	inch	79 / 151 / 250
Lifting speed, unloaded / at 40% of rated load / at 70% of rated load	fpm	71 / 65 / 43
Lowering speed, unloaded / at rated load	fpm	69 / 79
DRIVING DATA		
Drive speed forward, unloaded / at rated load	mph	15 / 13
Drive speed reverse, unloaded / at rated load	mph	11 / 10
Incline (driving ability) at rated load at 0 mph / at 1.24 mph	%	34 / 21
Towing (power ability) at rated load at 0 mph / at 1.24 mph	kN	396 / 260
SERVICE WEIGHT / AXLE LOADS		
Service weight	lbs	155 300
Axle loads front LC1, unloaded / at rated load	lbs	78 500 / 224 200
Axle loads front LC2, unloaded / at rated load	lbs	87 600 / 209 200
Axle loads front LC3, unloaded / at rated load	lbs	99 700 / 178 900
Axle loads rear LC1, unloaded / at rated load	lbs	76 800 / 32 300
Axle loads rear LC2, unloaded / at rated load	lbs	67 800 / 16 500
Axle loads rear LC3, unloaded / at rated load	lbs	55 700 / 13 900
Axle loads in driving position, front/rear (at rated load)	lbs	198 200 / 58 300
ENGINE		
Engine make, model name		Cummins X12-C350
Emission approval EU / US		Stage V / Tier 4 Final
Monitoring / emission controlled / CanBus		Yes / yes / yes
Fuel / type of engine		Diesel / 4-stroke CI
Rated power ISO 3046 / max speed	kW / rpm	283 / 2 000
Rated torque ISO 3046 / at speed	Nm / rpm	1 857 / 1 400
Displacement / No. of cylinders / configuration	cui / /	720 / 6 / inline
Fuel consumption, normal operations	gph	3.9 - 4.7
Alternator, type / power / amperage	W / Amp	AC / 3 080 / 110
Starting battery, voltage / capacity	V / Ah	2 x 12 / 140
TRANSMISSION		
Transmission make, model name		DANA TE-30
Monitoring / reverse protection / CanBus		Yes / yes / yes
Clutch, type		Torque converter
Transmission type / type of shift gear		Softshift – Powershift / Automatic
No. of gears, forward/reverse		5/3
DRIVE AXLE & STEER SYSTEM		
Drive axle make, model name		Kessler D102
Drive axle type		Differential + hub reduction
Service brake, type / affected wheels		Oil cooled Wet Disc Brakes / drive wheels
Parking brake, type / affected wheels		Dry disc brake / spring applied / drive wheels
STEER AXLE & STEER SYSTEM		
Steer axle make / type		Konecranes / double acting single cylinder
Steering system		Hydraulic servo assisted / power steering
WHEELS		
Number of wheels, front+rear / Type (*driven)		4*+2 / pneumatic
Tire pressure front / rear	psi	145 / 145
Tire dimensions (Ply rating) front / rear	Inch (No)	18.00 x 25" (PR 40) / 18.00 x 25" (PR 40)
Rim dimension front / rear	Inch	13.00 x 25" / 13.00 x 25"
HYDRAULIC SYSTEM		
Hydraulic pump make, model name		Parker P2-series
Hydraulic system / pump type		Load sensing system / variable axial piston pump
Power-on-demand / Low energy / Separate tanks		Yes / yes / yes (hydraulics & Brakes)
Hydraulic oil pressure boom / spreader	psi	3500 / 2200
TANK VOLUMES		
Fuel tank volume	gal	169
Hydraulic tank volume	gal	221
LIFTING EQUIPMENT & SPREADER		
Spreader make / type		ELME 817-MPS / Toplift (container)
Spreader functions		20-40 ft containers
Spreader locking containers + trailer / lifting eyes		4 x top twist locks / 4x in the corners
Sideshift stroke / rotation / pile slope type (pile slope stroke)		±32 inch / +8 - 4 manual MPS (±2 deg)
OTHERS		
Noise level (inside Cab / Lm), DIN 45635	dB(A)	68
Noise level (inside Cab/ LpAZ), EN 12053 (EU + EFTA only)	dB(A)	73
Maximum Noise level (outside Lwa), 2000/14/EC (EU + EFTA only)	LWA	109
Sliding cabin / stroke		Manual / 116 inch
NORMS & STANDARDS		
Stability of Industrial Trucks ISO 13562		Yes
Safety of Industrial Trucks EN ISO 3691-2		Yes

TECHNICAL DATA : SMV 4632 TC5



191110/ 1