

The Kalmar 10-18 tonne Essential Forklift Range

QUALITY

for all



Kalmar Essential Range



EXCEEDING

your expectations.

The Kalmar Essential Forklift Range gives you everything you expect from Kalmar – a quality build with high availability and excellent productivity for a very competitive price.

Kalmar forklifts are built to take on your toughest loads, making them ideal for demanding applications like container, steel and wood handling. Our forklifts are available with lifting capacities from 10 -18 tonnes and three different masts to match your exact lifting needs. Our new range of Essential Forklifts will exceed your expectations.

Kalmar quality for all.



Expect Kalmar quality. Robust, reliable and with market leading availability, all Kalmar forklifts are designed to last, which is why they command the highest resale values in the market.



Expect greater value. Built on our proven platform, our new Essential Range delivers everything you need in a medium sized forklift, without compromise. You get a great machine, at a great price.



Expect a safer machine. The safety of your drivers and employees is critically important to us, which is why all Kalmar forklifts come with a wide range of safety features as standard.

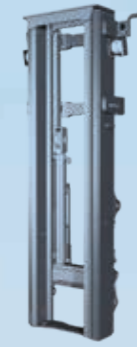


Expect more support. Kalmar has a full range of support services including Kalmar Care, Kalmar Genuine Parts, Kalmar Insight and the Kalmar Training, where drivers and service technicians can learn more about their new forklifts.

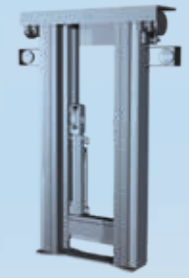
Mast options.



Duplex mast:
3000-7000 mm



Duplex full free mast:
3000-7000 mm



Triplex full free mast:
4500-7000 mm

Lifting capacities.



Lifting capacities in tonnes.



Built on a

PROVEN PLATFORM



We know you want a reliable machine, which is why our forklifts are built on a proven and tested platform. You will benefit from:

- **A standard driver interface** across the platform, making it easier for your operators to drive consistently and safely.
- **A common electrical system** that helps with quick and easy troubleshooting by using common error codes.
- **Proven chassis design** with high stability and durability.
- **A colour HMI screen** and control system with improved diagnostic tools, so troubleshooting time is reduced, and high availability is maintained.
- Only built with **branded quality components** from leading manufacturers.
- **More than 10,000 machines** already built on the G-Generation platform.



Keeping your drivers comfortable and

SAFE

The Essential cabin.

The Kalmar Essential cabin has everything your drivers need to operate at their best. The well-designed, spacious cabin offers great visibility both forward and backward. An adjustable seat, power-assisted steering, and easy lift operation with control levers or an optional joy stick. Keeping your drivers comfortable and in full control.

A safer operating environment.

Every Kalmar forklift comes with non-slip steps and handrails for safe three-point access to the cabin. The cabin has doors on both sides so the driver can exit from either side in case of an emergency. All servicing points are at ground level to reduce the risk of injury from falling. The entire Essential Range of machines complies with the most recent operator health and safety guidelines and can be equipped with additional optional safety features, making your operations as safe as possible.

Three cabin choices.

Fully enclosed cabin.



Partially enclosed with no doors.



Full open cabin with no doors or windows.



Two cabin positions.

- Standard mounted cabin.
- Raised (300 mm) cabin.



Safe, three point access.

Efficient and **EASY** to maintain.

A forklift built for efficiency.

The DCG100-180T is available with two Cummins engines. The B4,5 engine compliant for EU Stage V and US Tier 4 final markets, and the QSB4,5 engine for EU Stage IIIA and non-regulated markets. The engines are combined with a highly efficient gearbox and drive axle. Our gear pumps are extremely reliable, easy to service and come in three different capacities, depending on the size of your forklift.

Extra efficient:

Lift & lowering speeds

- ↑ 0,35 m/sec without load
- ↑ 0,30 m/sec with load
- ↓ 0,40 m/sec without load
- ↓ 0,40 m/sec with load

Top speed

30km/h

Cummins engine ratings

123kW EU Stage V /
USA EPA Tier 4 final

119 kW EU Stage IIIA

Easy to maintain, with industry-leading service intervals.

Performing daily inspections and routine servicing is quick and convenient with all check points directly accessible at ground level. The electrical cabinet is easy to access and, when the cabin is raised, the hydraulic filters, servicing points and the entire drivetrain can be reached from one location. With industry-leading service intervals of 500 hours, your machine will spend less time being maintained and more time working.

Kalmar has a range of options for you to choose from:

For the machine:



Rear Mounted Camera. Knowing what's going on behind you is critical when other personnel are present. A rear mounted camera can provide real-time information to an in-cabin display, helping improve personnel and driver safety.



LED Blue Safety Light. To protect bystanders in noisy environments, a blue LED safety light can be fitted. The safety light projects onto the ground behind the forklift, so bystanders can see which direction the forklift is moving and do not need to rely on hearing the machine.



Reverse Beeper System. Working side by side with moving vehicles always involves some safety risks. Installing a reverse beeper system provides a clear acoustic alert when the forklift is reversing, so personnel are sure to stay out of harm's way.



Speed Limiter. Allows you to set a safe speed limit on the forklift that your operators cannot exceed.



Additional lighting. Extra lighting brings greater operational visibility and safety for personnel working at your site, particularly at night. You can choose from:

- Flashing brake lights when reversing
- Additional lights on the mast (2 pc)
- Additional lights on the cabin roof (2 pc).



Electronic Inching. When you are lifting heavy loads, you will need additional power. Electronic Inching allows you to maintain high engine revs for the hydraulic system without engaging the drive in the gearbox. This is achieved by releasing the clutch electronically prior to revving the engine.



Central Greasing: By installing a central greasing system, you can be certain that your machine components are fully lubricated when they need to be, no matter where they are or how difficult it is to access them. Keeping them fully lubricated will reduce your servicing and component replacement costs.

For the cabin:

- You can choose to have your cabin mounted 300 mm higher for better visibility.
- Your cabin can be fully enclosed, partially enclosed or fully open.
- You can choose to add air-conditioning or sun screens to protect your drivers from the sun.
- You can choose additional grid protection for enhanced driver safety when handling items that may fall, like wood or other debris.
- Or upgrade to a premium GRAMMER seat with additional dampening for the ultimate in operator comfort.



SUPPORT

when and where you need it.

Making sure your business never stops.

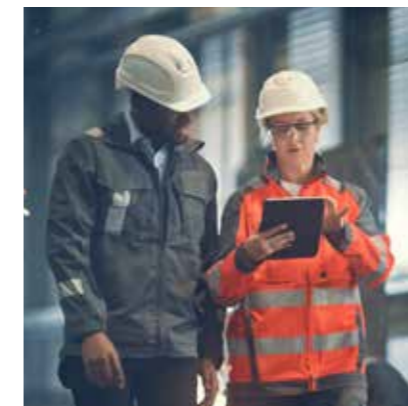
Every Kalmar Care contract is specially tailored to meet your needs. Each is designed to help you improve your operational efficiency, drive productivity and secure financial predictability. Kalmar Care contracts include a set of standardised service modules to meet your business needs.



Optimise your operations with Insight.

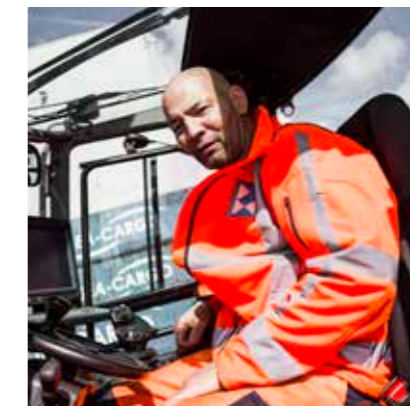
Kalmar Insight is a performance management tool for cargo and material handling, which gives you a valuable and easy to use overview of your daily operations based on equipment status and performance. Making it quicker for you to take action on relevant information that will help you improve your operations, your equipment's performance and your business.

Kalmar Insight* comes fitted in all new Kalmar machines and can be retrofitted to existing Kalmar machines or those built by other manufacturers.



Financing options for you.

You may choose to buy your new forklift outright or consider leasing or renting your equipment. Kalmar offers a range of options that give you the financial predictability you need and the option to upgrade your equipment after a fixed period. With our leasing packages, you can focus on your core operations, while we perform all your service and maintenance tasks. Kalmar can also work with you when trading in your old equipment. No matter what your service and support needs are, make sure you speak to your local Kalmar team first.



Kalmar Training.

For your team to get the most out of their new forklift, the Kalmar Training Centre offers a range of courses for both your technicians and operators. Operators will be shown how to optimise their day-to-day operational performance and what needs to be checked daily on the forklift before operations begin.

Technicians will be given the knowledge needed to keep your new forklift in top condition. Courses are a mix of theory and hands-on experience and can be held at Kalmar or at your site.



When the right part matters.

When something needs to be replaced, you need a spare part that meets your exact needs – urgently. Kalmar offers a rapid delivery service for over 50,000 premium-quality genuine parts to anywhere in the world, with installation support if needed.

You may also want to consider outsourcing all or part of your spare parts management and inventory control. Kalmar Parts Care makes sure that critical spare parts are always on hand so your equipment downtime is kept to a minimum. Each Kalmar Parts Care plan is based on your operational needs, so talk to us today and see how we can improve your parts availability while reducing your inventory costs.

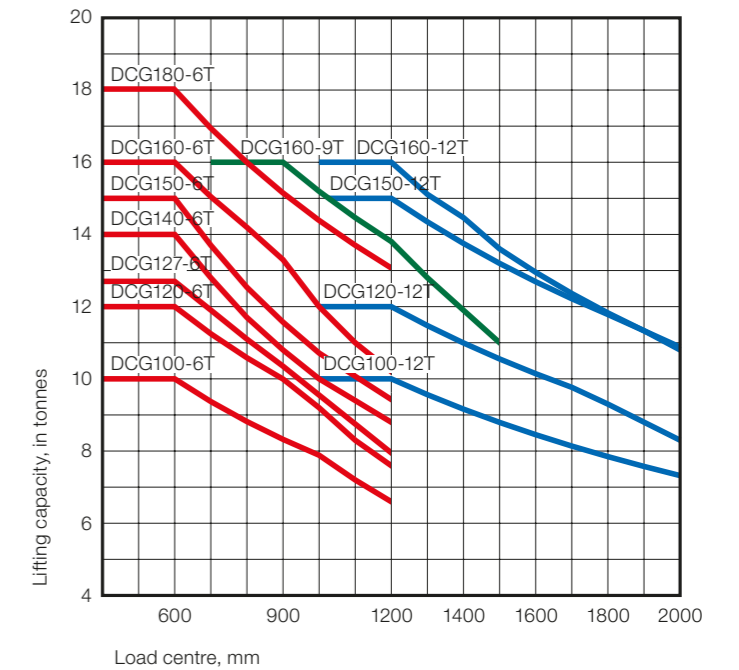
*Installation costs and/or an annual subscription fee may apply.

DRIVETRAIN

		Cummins B4,5 ZF 3WG161 (123 kW)	
		Manufacturer's type designation	Cummins B4.5 (Turbo-Intercooler)
ENGINE	Fuel, type of engine	Diesel, 4-stroke	
	Rating ISO 3046 / at revs	kW / rpm	123 / 2200
	Peak torque ISO 3046 / at revs	Nm / rpm	763 / 1200
	Number of cylinders / displacement	cm³	4 / 4506
	Fuel consumption, normal driving	l/h	7-9
	AdBlue consumption, normal driving	% of diesel	4-6
	Emission standard	EU Stage V / USA EPA Tier 4 final	
GEARBOX & MISC.	Manufacturer's type designation	ZF 3WG161	
	Clutch, type	Torque converter	
	Gearbox, type	Hydrodynamic Powershift	
	Numbers of gears, forward / reverse	3 / 3	
	Alternator, type / power	W	AC / 1960
	Starting battery, voltage / capacity	V / Ah	2x12 / 145
	Driving axle, manufacturer / type	Kessler D61/D81 / Differential and hub reduction	

		Cummins QSB4,5 ZF 3WG161 (119 kW)	
		Manufacturer's type designation	Cummins QSB4,5 (Turbo-Intercooler)
ENGINE	Fuel, type of engine	Diesel, 4-stroke	
	Rating ISO 3046 / at revs	kW / rpm	119 / 2200
	Peak torque ISO 3046 / at revs	Nm / rpm	624 / 1500
	Number of cylinders / displacement	cm³	4 / 4457
	Fuel consumption, normal driving	l/h	7-9
	AdBlue consumption, normal driving	% of diesel	N/A
	Emission standard	EU Stage IIIA	
GEARBOX & MISC.	Manufacturer's type designation	ZF 3WG161	
	Clutch, type	Torque converter	
	Gearbox, type	Hydrodynamic Powershift	
	Numbers of gears, forward / reverse	3 / 3	
	Alternator, type / power	W	AC / 1960
	Starting battery, voltage / capacity	V / Ah	2x12 / 145
	Driving axle, manufacturer / type	Kessler D61/D81 / Differential and hub reduction	

LIFTING CAPACITIES



PERFORMANCE

		DCG100-6T DCG120-6T DCG127-6T		
		DCG100-6T	DCG120-6T	DCG127-6T
Lifting speed	Unloaded (m/s)	0.45	0.35	0.35
	At 80 % of rated load (m/s)	0.40	0.30	0.30
Lowering speed	Unloaded (m/s)	0.40	0.40	0.40
	At rated load (m/s)	0.40	0.40	0.40
Travelling speed,	Unloaded (km/h)	29	29	30
	At rated load (km/h)	28	28	28
Gradeability, max.	Unloaded (%)	94	89	79
	At rated load (%)	46	42	38
Gradeability, at 2 km/h	Unloaded (%)	66	64	58
	At rated load (%)	36	33	30
Drawbar pull	Max. (kN)	109	109	105
Noise level, inside	LpAZ*, Essential cabin (dB(A))	76	76	76
	LpAZ*, Essential cabin OHG (dB(A))	-	-	-
Noise level, outside	LWA** (dB(A))	107	107	107

		DCG140-6T DCG150-6T DCG100-12T DCG120-12T DCG150-12T DCG160-6T DCG160-9T DCG160-12T DCG180-6T							
		DCG140-6T	DCG150-6T	DCG100-12T	DCG120-12T	DCG150-12T	DCG160-6T	DCG160-9T	DCG160-12T
Lifting speed	Unloaded (m/s)	0.35	0.35	0.35	0.35	0.35	0.35	0.35	0.35
	At 80 % of rated load (m/s)	0.30	0.30	0.30	0.30	0.30	0.30	0.30	0.30
Lowering speed	Unloaded (m/s)	0.40	0.40	0.40	0.40	0.40	0.40	0.40	0.40
	At rated load (m/s)	0.40	0.40	0.40	0.40	0.40	0.40	0.40	0.40
Travelling speed,	Unloaded (km/h)	30	30	30	30	30	30	30	30
	At rated load (km/h)	28	27	28	28	27	27	27	27
Gradeability, max.	Unloaded (%)	77	64	67	62	55	65	57	60
	At rated load (%)	36	32	39	35	30	31	29	28
Gradeability, at 2 km/h	Unloaded (%)	56	48	50	47	42	49	43	45
	At rated load (%)	28	25	31	27	24	25	23	22
Drawbar pull	Max. (kN)	105	105	105	105	105	105	105	105
Noise level, inside	LpAZ*, Essential cabin (dB(A))	76	76	76	76	76	76	76	76
	LpAZ*, Essential cabin OHG (dB(A))	-	-	-	-	-	-	-	-
Noise level, outside	LWA** (dB(A))	107	107	107	107	107	107	107	107

		DCG100-6T DCG120-6T DCG127-6T		
		DCG100-6T	DCG120-6T	DCG127-6T
Lifting speed	Unloaded (m/s)	0.45	0.35	0.35
	At 80 % of rated load (m/s)	0.40	0.30	0.30
Lowering speed	Unloaded (m/s)	0.40	0.40	0.40
	At rated load (m/s)	0.40	0.40	0.40
Travelling speed,	Unloaded (km/h)	29	29	30
	At rated load (km/h)	27	27	27
Gradeability, max.	Unloaded (%)	77	74	67
	At rated load (%)	41	36	33
Gradeability, at 2 km/h	Unloaded (%)	61	58	53
	At rated load (%)	34	30	28
Drawbar pull	Max. (kN)	98	98	94
Noise level, inside	LpAZ*, Essential cabin (dB(A))	76	76	76
	LpAZ*, Essential cabin OHG (dB(A))	-	-	-
Noise level, outside	LWA** (dB(A))	108	108	108

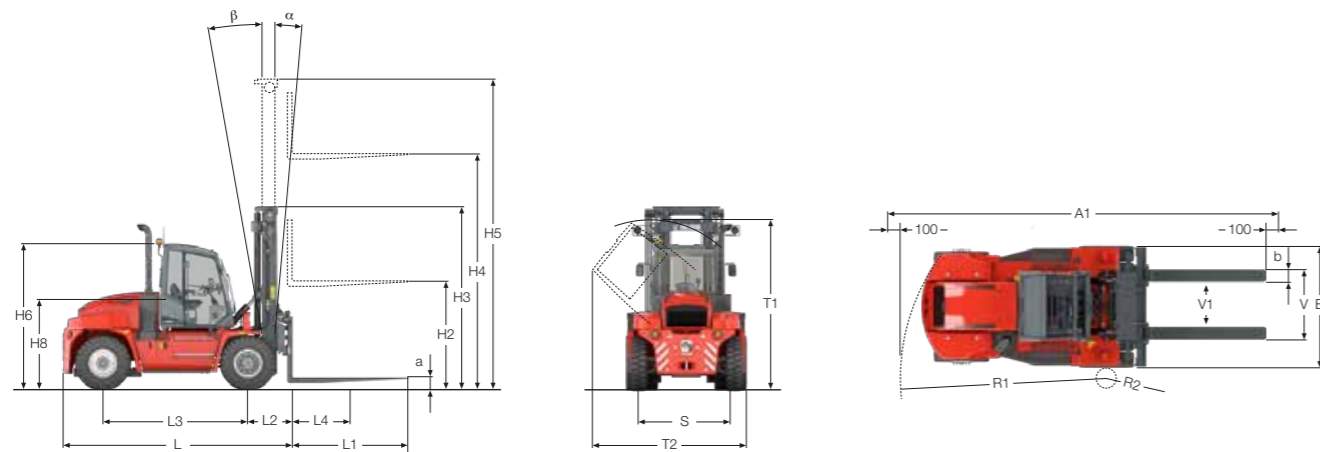
		DCG140-6T DCG150-6T DCG100-12T DCG120-12T DCG150-12T DCG160-6T DCG160-9T DCG160-12T DCG180-6T							
		DCG140-6T	DCG150-6T	DCG100-12T	DCG120-12T	DCG150-12T	DCG160-6T	DCG160-9T	DCG160-12T
Lifting speed	Unloaded (m/s)	0.35	0.35	0.35	0.35	0.35	0.35	0.35	0.35
	At 80 % of rated load (m/s)	0.30	0.30	0.30	0.30	0.30	0.30	0.30	0.30
Lowering speed	Unloaded (m/s)	0.40	0.40	0.40	0.40	0.40	0.40	0.40	0.40
	At rated load (m/s)	0.40	0.40	0.40	0.40	0.40	0.40	0.40	0.40
Travelling speed,	Unloaded (km/h)	30	30	30	30	30	30	30	30
	At rated load (km/h)	27	26	27	27	26	26	26	26
Gradeability, max.	Unloaded (%)	65	55	57	53	46	56	49	51
	At rated load (%)	31	28	34	31	26	27	26	25
Gradeability, at 2 km/h	Unloaded (%)	52	45	47	43	39	45	40	42
	At rated load (%)	26	24	29	26	22	23	22	21
Drawbar pull	Max. (kN)	94	94	94	94	94	94	94	94
Noise level, inside	LpAZ*, Essential cabin (dB(A))	76	76	76	76	76	76	76	76
	LpAZ*, Essential cabin OHG (dB(A))	-	-	-	-	-	-	-	-
Noise level, outside	LWA** (dB(A))	108	108	108	108	108	108	108	108

* Noise level according to EN12053
 ** Noise level according to 2000/14/EC

LIFTING DATA

	Lift height			Mast height		Free lift	
	H4	H3 min	H5 max	H2	H3 min	H5 max	H2
DUPLEX STANDARD, CLEAR VIEW	DCG100-140T*			DCG100-180T**			
	3000	3015	4515	-	3195	4695	-
	3250	3140	4765	-	3320	4945	-
	3500	3265	5015	-	3445	5195	-
	3750	3390	5265	-	3570	5445	-
	4000	3515	5515	-	3695	5695	-
	4500	3765	6015	-	3945	6195	-
	5000	4015	6515	-	4195	6695	-
	5500	4265	7015	-	4445	7195	-
	6000	4515	7515	-	4695	7695	-
DUPLEX FULL FREE LIFT, CLEAR VIEW	3000	3015	4515	1500	3195	4695	1500
	3250	3140	4765	1625	3320	4945	1625
	3500	3265	5015	1750	3445	5195	1750
	3750	3390	5265	1875	3570	5445	1875
	4000	3515	5515	2000	3695	5695	2000
	4500	3765	6015	2250	3945	6195	2250
	5000	4015	6515	2500	4195	6695	2500
	5500	4265	7015	2750	4445	7195	2750
	6000	4515	7515	3000	4695	7695	3000
	7000	5015	8515	3500	5195	8695	3500
TRIPLEX FFL, CW	4500	2970	5970	1500	3130	6190	1500
	5000	3137	6470	1667	3297	6690	1667
	5500	3303	6970	1833	3463	7190	1833
	6000	3470	7470	2000	3630	7690	2000
	6500	3637	7970	2167	3797	8190	2167
	7000	3803	8470	2333	3963	8690	2333

* DCG100-140-6T
 ** DCG150-180-6T, DCG160-9T, DCG100-160-12T



+25 mm on H3 and H5 on the DCG140-6 due to 12,00 in wheels

STANDARD

- Cabin**
- Std seat with 2-p belt mechanical suspension
 - Adjustable height length and tilt backrest
 - Armrest adjustable for height and reach, on right side
 - Steering wheel with spinner
 - Tilttable steering wheel column
 - Levers installed in steering column (shifting, direction indicators)
 - Brake pedal
 - Electronic accelerator pedal.

- For closed cabin**
- Window panes on roof, rear, and front (tinted and tempered)
 - Simple heater unit with directed vents
 - Wiper and washer system for front pane.

- Drive train**
- Steering axle: Kalmar
 - Drive axle: Kessler D61/81
 - Automatic gear shift with declutch, possible to change to manual gearshift.

- Hydraulics**
- Electrical servo
 - 2 functions lift, tilt
 - Level sight glass on hydraulic oil tank
 - Tilt angles standard 5/10.

- Body**
- Tilttable cab
 - Steps with anti-slip protection
 - Lifting eyes in mast.

- Electrical system**
- Electrical system 24 V
 - Rear lights and brake lights, LED
 - Working light front fenders 2 pcs, LED
 - Working light mast 2 pcs, LED
 - Indicator lamps incl. hazard lights, LED
 - Mechanical main power switch.

- Wheels**
- DCG100-6T & DCG120-6T: 11.00x20/16PR
 - DCG127-6T to DCG160-12T: 12.00x20/20PR
 - DCG180T: 12,00x20/20PR HD.

- Colour**
- Cab: frame RAL 7011/70, covers RAL 7021/10
 - Chassis: Kalmar Red 2012 (Base ref. RAL 3000/75)
 - Lifting equipment: Kalmar Black (Base ref. RAL 7021/30).

- Documentation and decals**
- Operators manual (electronic)
 - Maintenance manual (electronic)
 - Parts catalogue (electronic).

- Fleet management**
- Equipped with telemetric hardware for Kalmar Insight.





KALMAR

Making your every move count

Published by Kalmar, part of Cargotec. Copyright © Cargotec 2021. All rights reserved. No part of this publication may be copied or reproduced without permission of the copyright owner. The content of this document is provided "as is", without warranties of any kind with regards to its accuracy or reliability and excluding all implied warranties. We reserve the rights to make changes to any of the items described in this document without prior notice. The content of each service and availability of particular services may vary.

www.kalmarglobal.com